

MONTHLY MEMBERSHIP PROGRESS REPORT

District 201V5

Results as of: 5/31/2024

GMT:

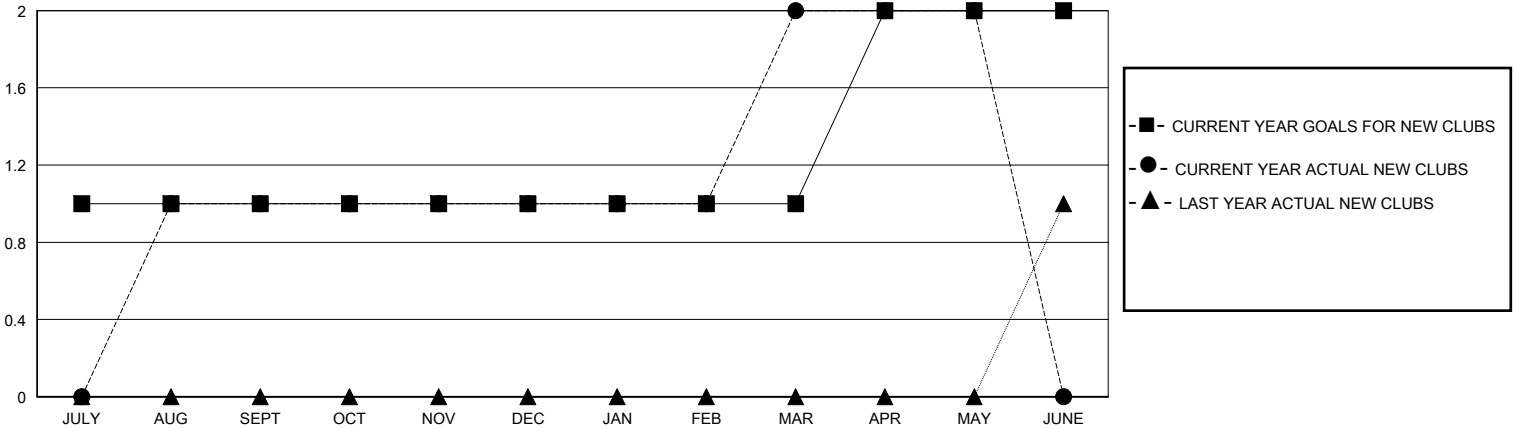
LOCATION AUSTRALIA

GMT CA

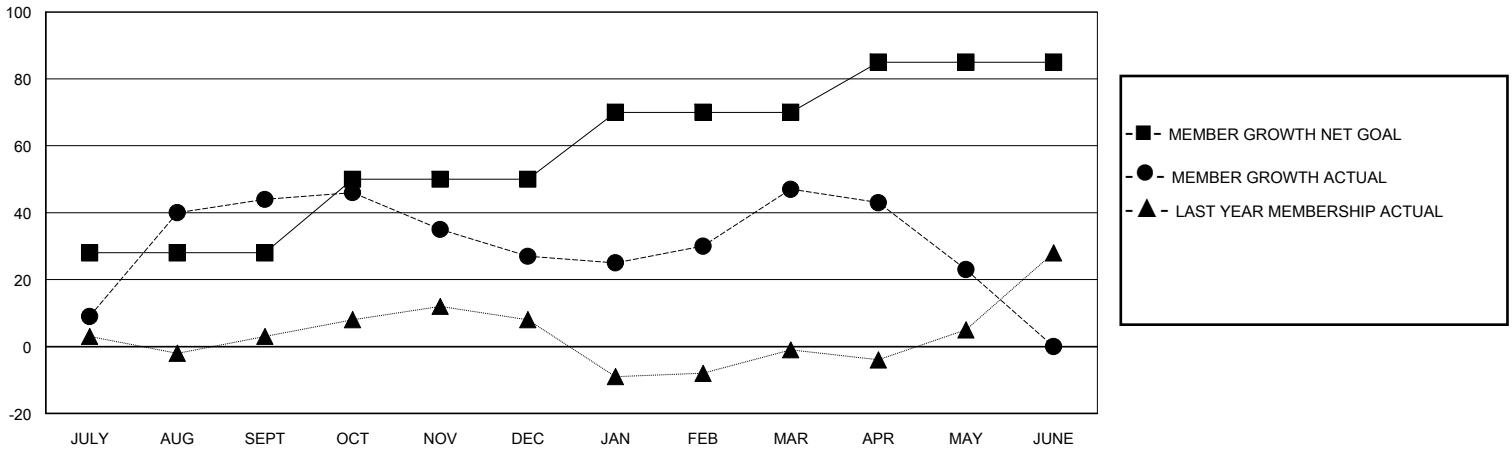
| Clubs | | | |
|-----------------------|---------------|-----------|---------------|
| RESULTS FOR 2023-2024 | | | |
| QUARTER | NEW CLUB GOAL | NEW CLUBS | DROPPED CLUBS |
| JULY/AUG/SEPT | 1 | 1 | 1 |
| OCT/NOV/DEC | 0 | 0 | 0 |
| JAN/FEB/MAR | 0 | 1 | 0 |
| APR/MAY/JUNE | 1 | 0 | 0 |

| Members | | | |
|-----------------------|------------------------|----------------------|--|
| RESULTS FOR 2023-2024 | | | |
| QUARTER | MEMBER GROWTH NET GOAL | MEMBER GROWTH ACTUAL | DROPPED MEMBERS ACTUAL (including transfers) |
| JULY/AUG/SEPT | 28 | 79 | 31 |
| OCT/NOV/DEC | 22 | 27 | 41 |
| JAN/FEB/MAR | 20 | 54 | 29 |
| APR/MAY/JUNE | 15 | 15 | 36 |

GOALS AND ACTUAL NEW CLUBS CUMULATIVE



GOALS AND ACTUAL MEMBERS CUMULATIVE



DROPPED CLUBS: 1

43 CLUBS OF 67 ADDED 1 OR MORE NEW MEMBERS

GENDER DISTRIBUTION

MALE 788 (62.44%)
FEMALE 467 (37.00%)

DROPPED MEMBERS

| | |
|----------------|------------|
| DECEASED | 13 |
| CLUB CANCELLED | 0 |
| OTHER | 124 |
| TOTAL | 137 |

[CLICK HERE FOR CUMULATIVE MEMBERSHIP DATA](#)

| | |
|---------------------------------|-----|
| TOTAL FAMILY UNIT MEMBERS | 142 |
| FAMILY MEMBERS PAYING HALF DUES | 74 |